

Fingerprint Verification Door Lock

PROFESSIONAL MANUFACTURER

Fingerprint Lock DL-2000



- Convenient finger touch design
- Zinc alloy casing
- 12 button keypad
- Blue LCD prompt
- Keypad for guest/temporary access
- Access entry records
- Backup key and recharge kit for emergency
- In Silver and Polished Gold

FEATURES

- › User Management and audit trail built into unit
- › Easy to read LCD display on back lock body
- › Ability to enter persons name directly in the lock
- › Add / delete individual users directly on the lock
- › Standalone and TCP/IP network. Battery operated
- › 279 fingerprint user capacity (3 grade registered at will)
- › Fingerprint, Pin, Pin + Fingerprint, or Key Access methods
- › All weather fingerprint lock -Operating Temp: -25 ° to 75°C
- › Bump resistant laser cut, dimple keys (2 included)
- › Easy setup and enrollment process
- › 4 AA battery with approximately 3,500 uses
- › Low battery warning alert
- › Sliding weather cover triggers sensor to power on automatically
- › Fingerprints will not be lost if batteries fail
- › High grade durable sensor with 500 dpi optical sensor
- › Deadbolt automatically engages when door closes
- › Up to 3 templates can be enrolled per user
- › Add user by name or by number directly on the lock
- › Auto expire user at a set date and time

SPECIFICATIONS

Item	Description
Sensor	Optical with high abrasion resistance
Scanning time	<1 Sec
Response time	<1 Sec
Resolution	500DPI
Identification Method	1: N; 1:1
Unlock	Fingerprint; Code+fingerprint; Password (can be defined); manual key
FRR (False Rejection Rate)	0.001%
FAR (False Acceptance Rate)	0.00001%
Fingerprint capacity	99 users, each user could register 3 fps
Passwords	3 groups of 3-8 digits password
Transaction records	50000
Static consumption	12uA
Dynamic consumption	10mA-300mA
System power supply	4 (AA) alkaline battery, external power supply port (emergency)
Working temperature	-30°C~85°C
Working humidity	<90% RH
LCD	blue backlight
Language	Chinese, English, French, German
Option	TCP/IP communication

FUNCTIONS



The front panel includes 12 keys

0-9 digit keys and “#”, “*” keys
Could input number and user's name, set password



Sliding cover design

Solid and compact inner PCB
prevent moisture & corrosion



User management

Could set up with master, user and guest. Each grade has different authorization. Guest's finger will be auto deleted when the date expired



Easy operation menu

Operate like your mobile
Basic system set up.
Accessing query.



Convenient accessing mode

Verify with registered fingerprint or password, Needn't carry a key



Power economized

Alarm with “beep” on low battery
Power statue on main menu.



Blue LED display

Guide in English,
language can be customized



We provide security, also vogue!

32-chord polyphonic sound
With musical sounds on operation



Works with Dry/Rechargeable battery

Inner Rechargeable battery self-charging function



System protection

Auto-off when identification is refused 5 times.
Auto-shut down in 10sec if verified finger doesn't access in



Normal open-keeps in unlocking status

Normal close-keeps in locking status
Working like traditional mechanism lock



Emergency unlock

Emergency Keys to
external battery box in urgent situation.



System initialization

Returns the lock to initialization condition
Recover system if encounters with unusual



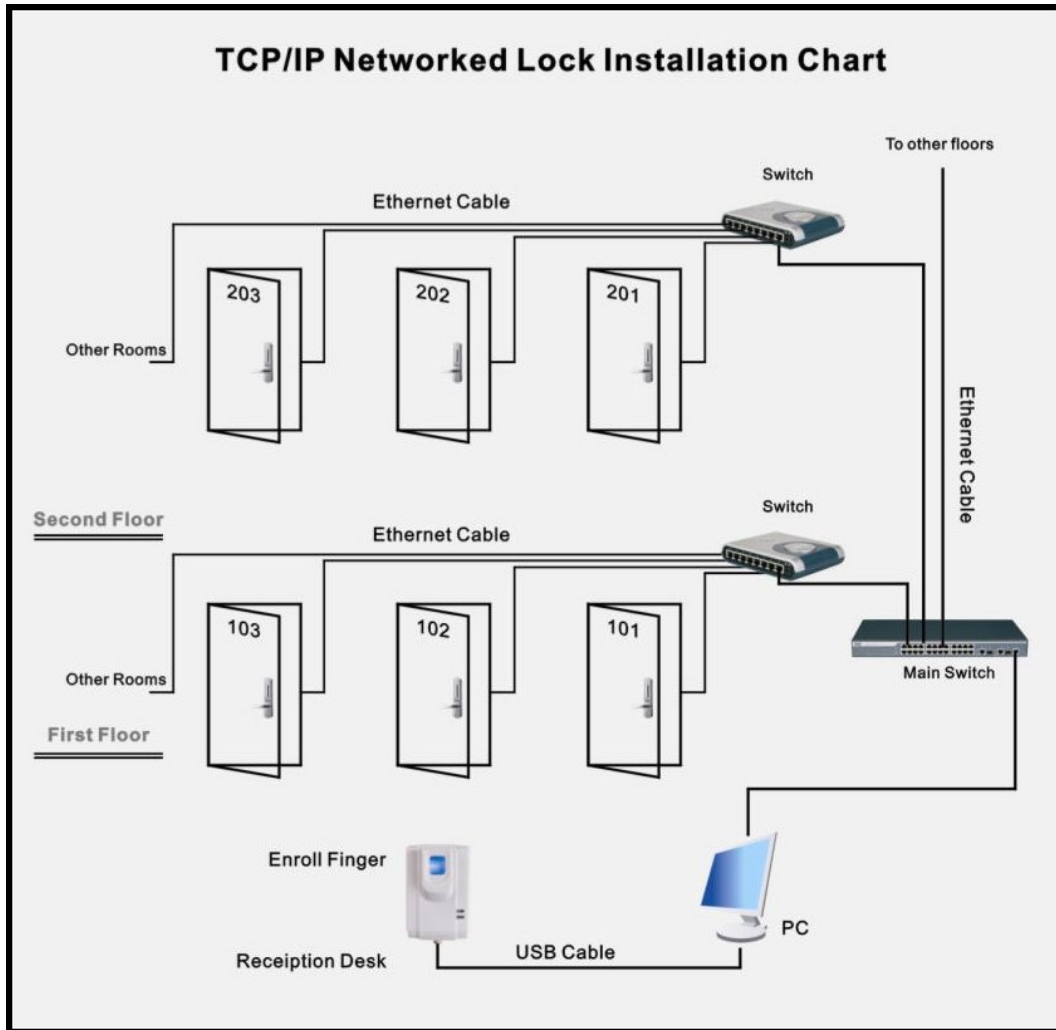
Checking records

By date, by user name or one by one.
Managing your lock with intelligent tech.

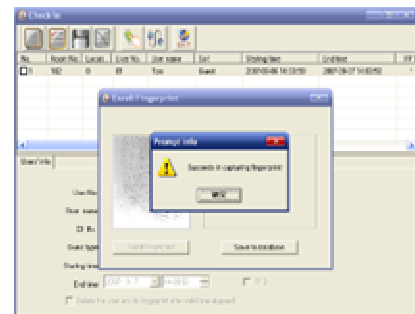
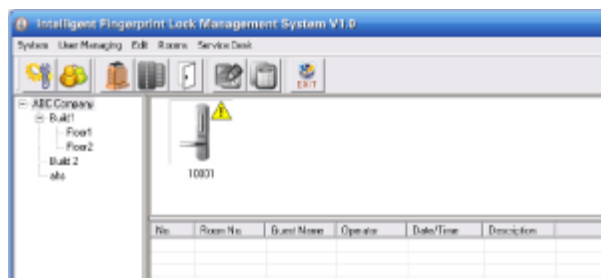
Networked

Optional LAN function – Communication with PC !




The unique lock with TCP/IP communication interface for option, can be widely applicable for Villa, Office, Hotel, Bank and other secure access or buildings centralized intelligent management. We offer easy operation managing software and SDK for customizing development.



User Friendly Communication Software



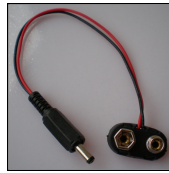
Components

 <p>Strike plate</p>	 <p>Installation template</p>
 <p>Strike</p>	 <p>Emergency cable</p>
 <p>Mortise</p>	 <p>Rubber Plate</p>
 <p>Dowel</p>	 <p>Screws</p>
 <p>Screws</p>	 <p>Cylinder</p>
 <p>Emergency Keys</p>	 <p>User Manual CD</p>

Remarks

Power supply for emergency

When battery voltage is low, you can unlock with external power supply or mechanical key.



Outer Package



Lock Pictures



Silver



Out door



Indoor



Polished Gold